

# Parkheath

*Sold on Service*

---

## **Belsize Park Gardens NW3 £2,950 PCM (£681 per week) - Camden Band E**



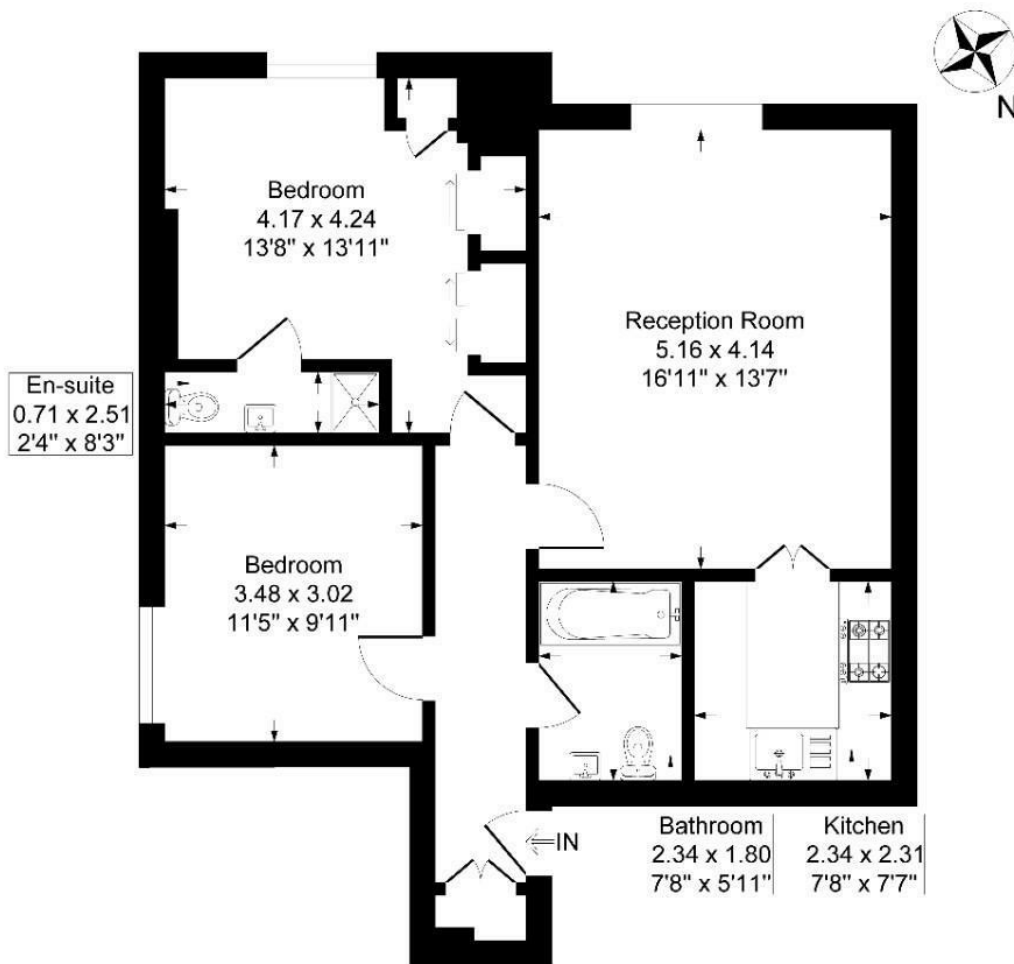
Bright and airy 2 double bedroom apartment  
Great size reception  
Main bedroom with en suite  
3 piece bathroom  
Close to Belsize Park tube

Newly decorated and carpeted  
Separate fully fitted kitchen  
2nd bedroom / study  
Premier tree-lined road  
EPC: Rating C, Council Tax: Camden band E

Belsize Park Office 020 7431 3104

# Belsize Park Gardens, Belsize Park, London, NW3

Approximate Gross Internal Floor Area = 68.3 sq m / 736 sq ft



## Second Floor

Illustration for identification purposes only, measurements are approximate, not to scale.

The particulars do not constitute part of an offer or contract. The particulars, including text, photographs and plans, are for the guidance only of prospective purchasers/tenants and must not be relied upon as statements of fact. The descriptions provided therein represent the opinion of the author and whilst given in good faith should not be construed as statements of fact. Nothing in these particulars shall be deemed a statement that the property is in good condition or otherwise or that any services or facilities are in good working order. All measurements are approximate